

EREMA's contribution to a clean environment

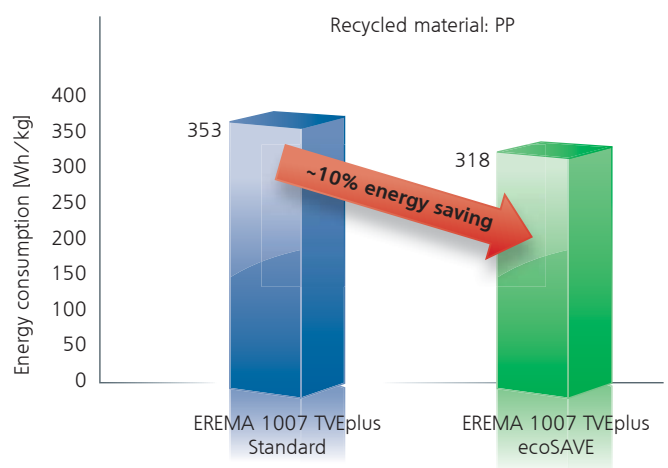


Optimise energy consumption
Reduce production costs and CO₂ emissions

The importance of lowering CO₂ emissions, energy consumption and production costs is growing rapidly. ecoSAVE technology addresses the optimisation of EREMA plastics recycling systems in precisely these areas. EREMA systems have always been known for their very high energy efficiency levels. As the leading manufacturer of plastics recycling systems, the company is aware of the responsibility attached to its role as a pioneer in this field. This is why, since 2010, all recycling systems that are ordered have even greater energy-saving efficiency and feature ecoSAVE technology.

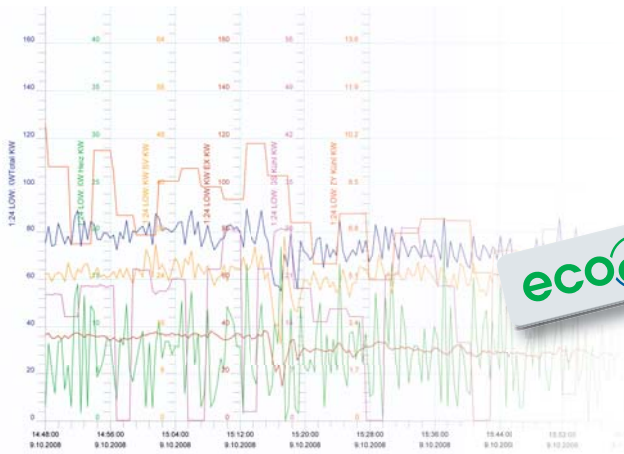
Up to 10% less energy consumption without additional costs

- › For system operators ecoSAVE means a reduction in production costs and further optimisation of energy consumption.
- › EREMA sees ecoSAVE as a commitment to environmental protection and a contribution to lowering CO₂ emissions.
- › This is the reason why all EREMA plastics recycling systems are equipped with this extra benefit at no additional cost.



ecoSAVE reduces energy consumption

Way ahead through research and development



Energy-optimised EREMA systems have the ecoSAVE sign.

Calculation example:
 EREMA 1007 TVEplus with ecoSAVE

ecoSAVE – potential savings over 7 years	
Energy saving	367,500 kWh
CO ₂ saving	228 t
Costs saved	EUR 29,400.00
Cost of investment	EUR 0.00

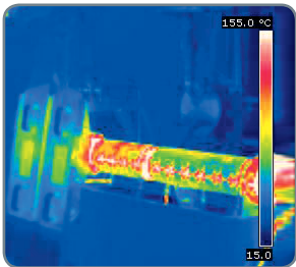
In practice this means potential savings of around 370,000 kWh and 230 t CO₂ over a 7-year period – calculated for an EREMA 1007 TVEplus machine with a production capacity of 1,500 t/a and 3 shifts (approx. 42,000 operating hours).

EREMA plastics recycling technology as the leading global standard

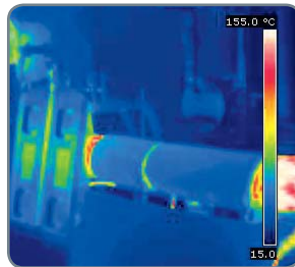
EREMA attaches great importance to research & development. Besides searching for new technologies, the emphasis is on continuous quality improvement and enhanced customer benefits.

ecoSAVE was developed especially to increase the added value for the customer. It is a complete design and process engineering package that includes a variety of energy-saving components and high-performance motors.

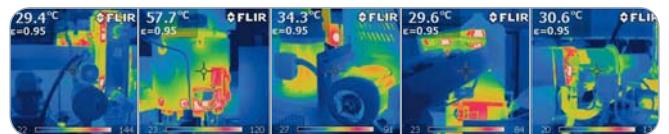
WITHOUT ecoSAVE



WITH ecoSAVE



Thermographic images from ecoSAVE test runs



Headquarters & Production Facilities
 EREMA Engineering Recycling
 Maschinen und Anlagen Ges.m.b.H.
 Unterfeldstraße 3
 A-4052 Ansfelden, Austria
 Phone +43 732 3190-0
 Fax +43 732 3190-23
 erema@erema.at, www.erema.at

Subsidiaries
 EREMA NORTH AMERICA INC.
 23 Old Right Road - Unit#2
 Ipswich, MA 01938 / USA
 Phone +1 978 356-3771
 Fax +1 978 356-9003
 erema@eremanet
 www.erema.net

EREMA JAPAN Co., Ltd.
 8F Tobu Yokohama Second Building
 Kanagawa Prefecture
 2-15-1, Kita Saiwai, Nishi-Ku
 220-0004 Yokohama, JAPAN
 Phone +81 45 317-2801
 Fax +81 45 317-2803
 erema@erema-japan.com
 www.erema.at

EREMA Shanghai Office
 Room 1009, Tomson Financial Building
 710 Dong Fang Road, Pudong
 Shanghai China (200122)
 Phone +86 21 6876-6201, 6876-6204
 Fax +86 21 6876-6203
 erema@erema.com.cn
 www.erema.at

For worldwide representatives see www.erema.at

Subject to technical modifications. Printed 10/2010. E
 © EREMA Engineering Recycling Maschinen und Anlagen Ges.m.b.H.

